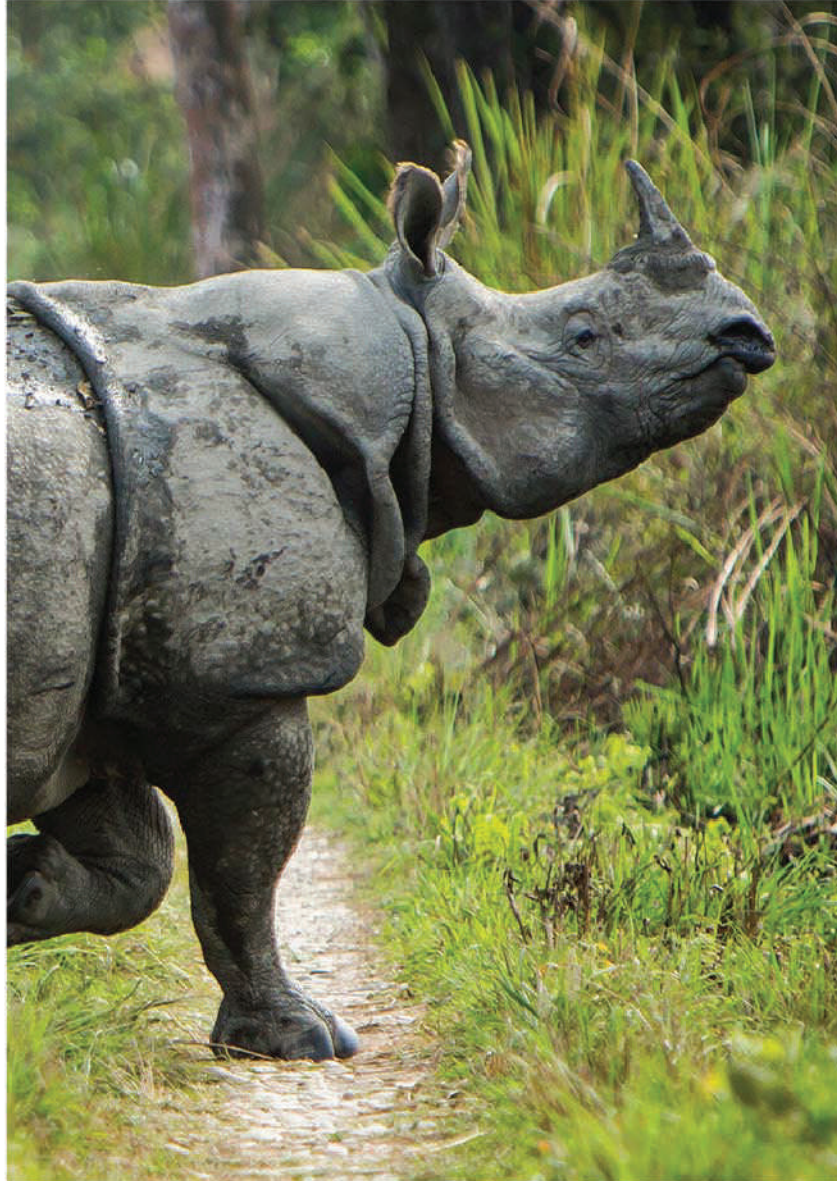
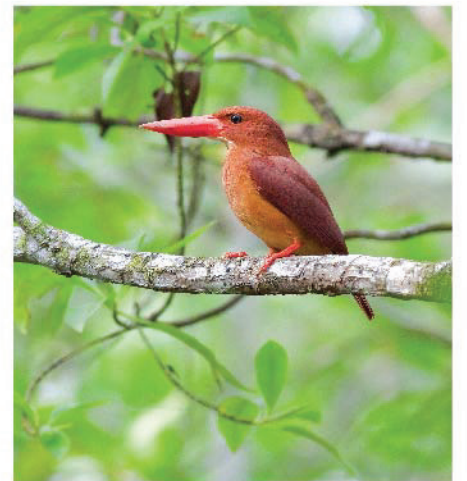


महत्कहणी इतरां
CHITWAN NATIONAL PARK
A TAJ SAFARI



A TALE OF EXTRAORDINARY ADVENTURE,
COMING SOON TO
THE HEART OF THE JUNGLE - APRIL 2016.







AMENITIES

| | | | |
|------------------|---|------------------------------|-------------------------|
| Accommodation | 1 Presidential Villa, 16 Luxury Pool Villas and 12 Hotel Suites | Personal Bars | Yes |
| Maximum Guests | 60 | Intercom | Yes |
| Children | Yes | Hairdryers | Yes |
| Triples | Yes on request | Laundry Included | Yes |
| Twin Beds | Yes (in hotel suites) | Suitable for disabled guests | Yes with assistance |
| Air Conditioning | Yes | Distance between Rooms | |
| Ceiling Fans | Yes | Check In | 12 noon |
| Swimming Pool | Yes | Check Out | 1 pm |
| Bath | Yes | Power | DG Backup 220 AC |
| Indoor Showers | Yes | Private 4X4 Safari Vehicle | Available at extra cost |
| Private WC | Yes | Child minding | Yes |
| In Room Safe | Yes | Credit Cards | Visa, Master Card, Amex |



Kathmandu to Meghauri Serai

- Short 20 minute flight from Kathmandu to Bharatpur airport
- Followed by a short drive (30 kms/45 mins drive) from Bharatpur to the lodge



Other Taj Safaris lodges:

Mahua Kothi, Bandhavgarh National Park

Banjaar Tola, Kanha National Park

Baghvan, Pench National Park

Pashangarh, Panna National Park

For reservations & Information please contact your travel agent / tour operator for more details or
Call our toll-free line in India: MTNL / BSNL users - 1800 111 825. Other networks: +91 22 66011 825.
E-mail: tajsafaris@tajhotels.com | www.tajhotels.com/tajsafaris | www.tajsafaris.com



www.facebook.com/TajSafaris



www.twitter.com/TajSafaris